

	silea SPA 48064 Osasco Emilia 1801 ITALY via Collegio di Spagna 34 Tel. +39 051 290229 http: www.silea.it	
	Year 2002 Code _____ DN 50	Categoria II Modulo D1
	Serial n° _____ 001/001	Pa 25 bar Ta 25/+65 °C U _____ It
	Fluid GRUPPO 1 Weight 400 Kg	

-BV - BALL VALVE - FIRE-SAFE WITH CLOSED VALVE LOCK
-DV - 1/2" DRAIN BALL VALVE
-CSB - COMPRESSION SPRING BALANCE
-ERC - EMERGENCY RELEASE COLLAR VALVE IN STAINLESS STEEL
-AC - ACTIVATING CABLE FOR ERC
-HLU - HUMMER LUG UNION MALE 6000 PSI - FIG.602
-RS - ROTATING SUPPORT

Remarks :

ITEMS NOT LISTED ARE FOR INTERNAL USE ONLY



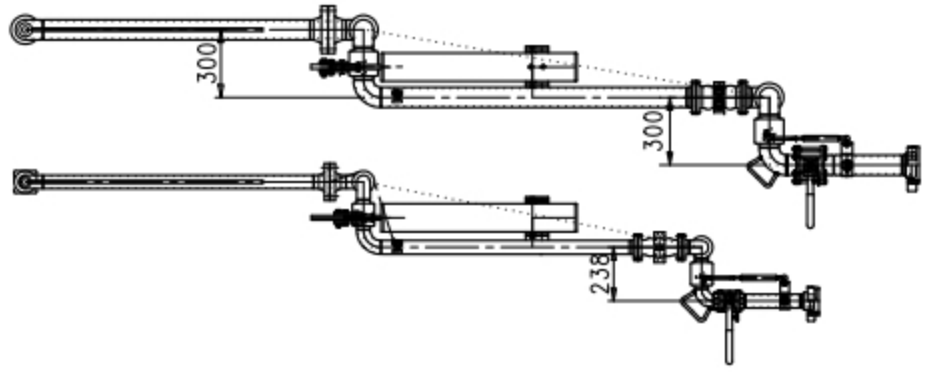
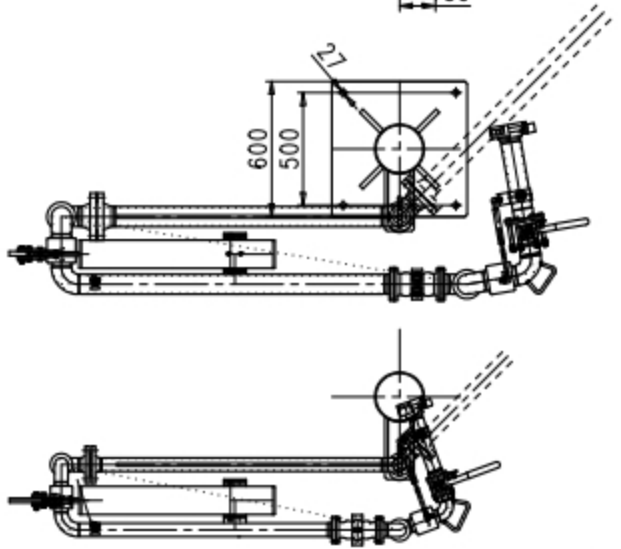
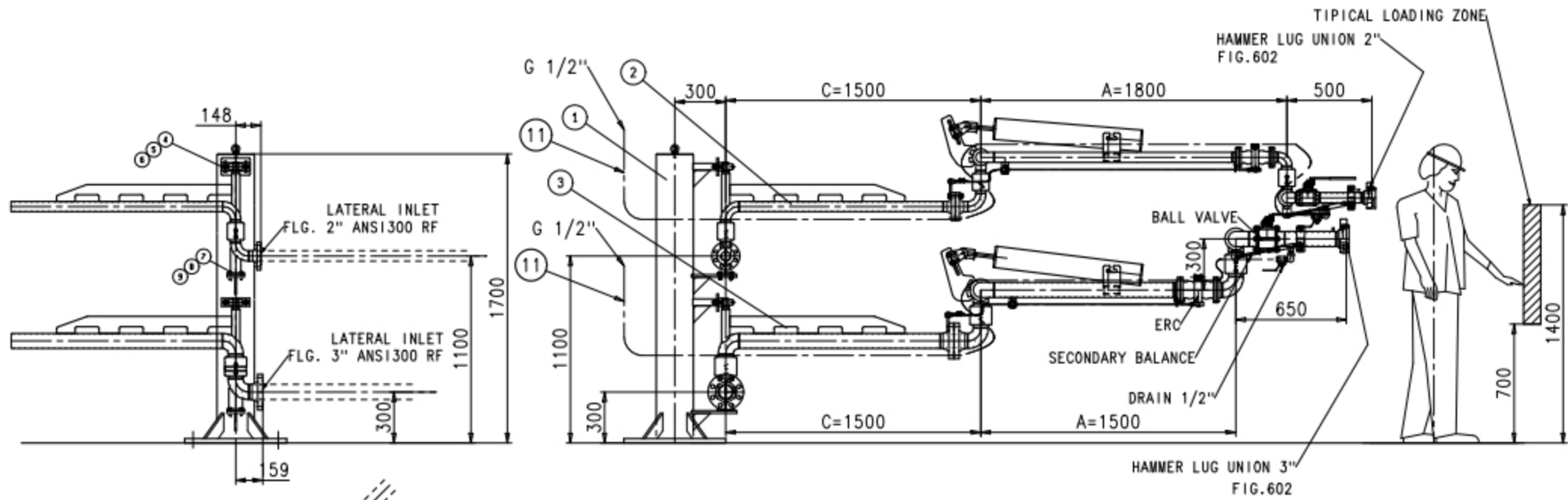
silea
Liquid Transfer s.r.l.
www.silea.it

DESCRIPTION :

LPG LOADING STATION 2"x2"x2 -L.P.-V.P.
DX+ERC+STAND POST

Material
C.S.+BUNA

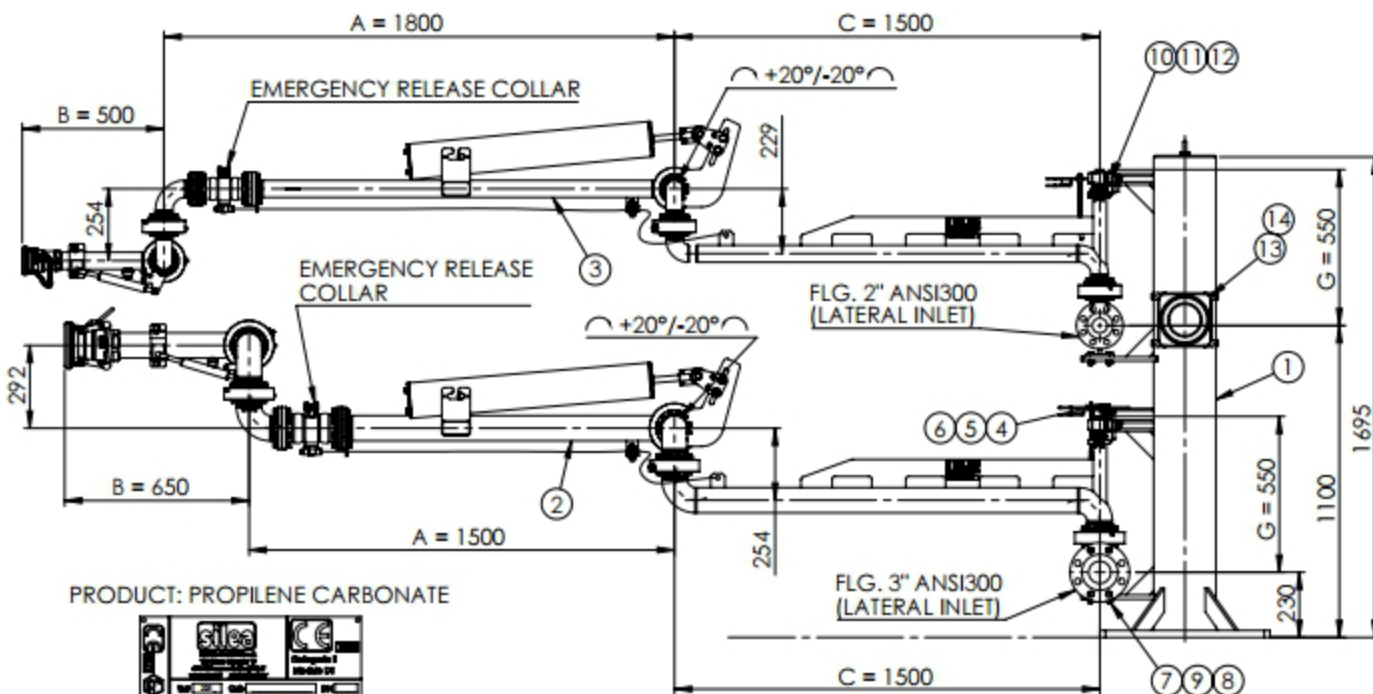
Rev.	Weight kg	Drawn by	Vis.	Scale	Date	Code
0	380	m-molinari		1:25	28/09/2009	18032033DX



	LIQUID TRANSFER s.r.l. Via Primo Maggio 19 48064 Ozzano Emilia (BO) ITALY www.silea.it	
	Categoria II Modulo D1	
Year <input type="text"/> Code <input type="text"/> DN <input type="text"/>	Serial n° <input type="text"/>	
Ps <input type="text"/> bar Ts <input type="text"/> °C V <input type="text"/> lt <small>(max)</small>	Fluid <input type="text"/> GRUPPO 1 Weight <input type="text"/> Kg	

Note :
montare e collaudare bracci vedi I.O. 4.4

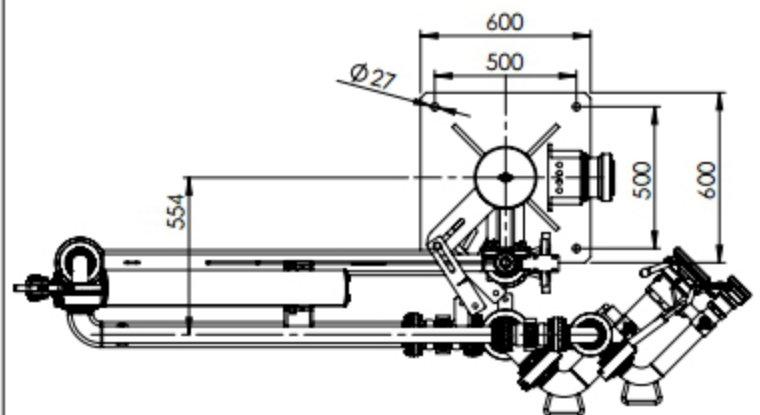
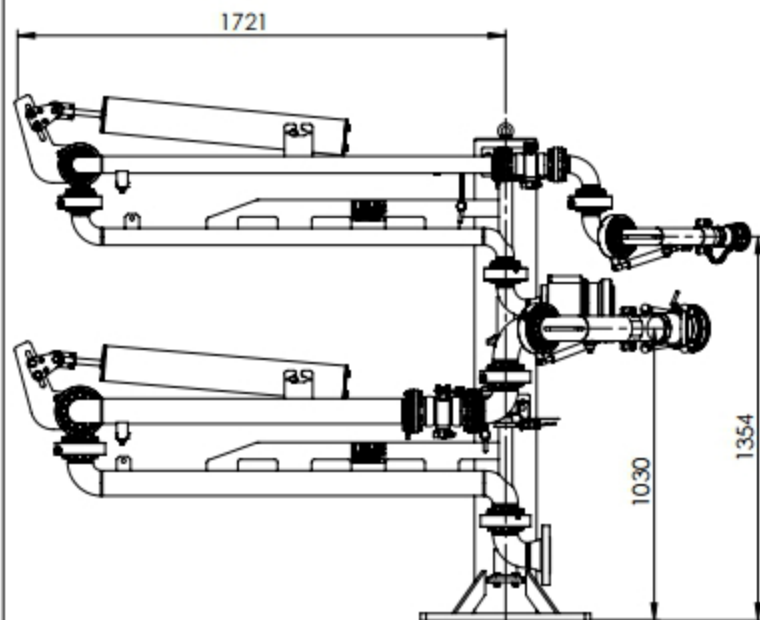
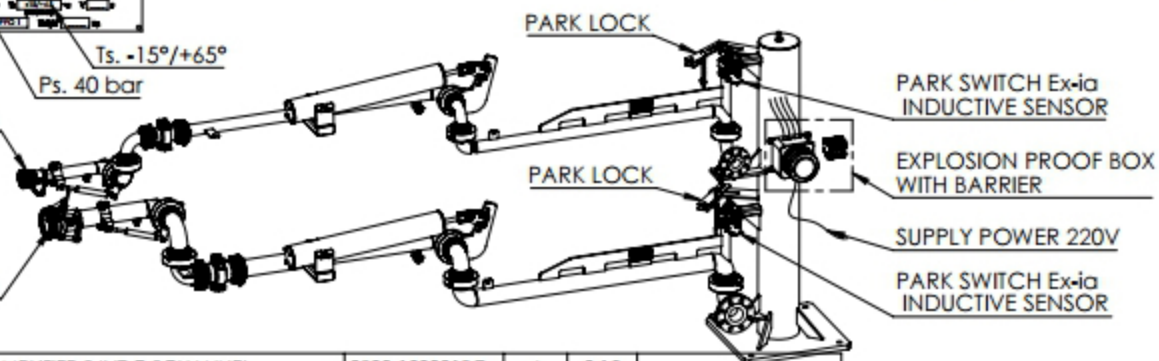
	Descrizione : LPG LOADING STATION 3"LIQ. 2"VAP. R.H. +ERC +HLU +3651 FLG.ANSI300 RX100%					
	Materiale KCS + S.S.					
Modif. 0	Peso in kg 473	Dis. utec3	Vis.	Scala 1:25	Data 14/11/2013	Codice 18032336DX-05



PRODUCT: PROPYLENE CARBONATE



DDC STANAG COUPLER 2" WITH SWITCH Ex-ia
 Ts. $-15^{\circ}/+65^{\circ}$
 Ps. 40 bar
 DDC STANAG COUPLER 3" WITH SWITCH Ex-ia



PARK POSITION

14	ISOLATED SWITCH AMPLIFIER 24VDC 2CHANNEL	0200-1000013G	4	0,15	
13	JUNCTION BOX	0200-1000033	1	7,2	PAINTED ALU
12	PIN	1801-0101031	2	0,038	AISI304
11	CHAIN FOR CAMLOCK COUPLING	04020101	2	0,007	CARBON STEEL
10	PARKING SUPPORT	1801-0101030	2	0,81	AISI304
9	HEXAGON NUT	0054-1100007	8	0,012	AISI304
8	WASHER	0065-1100006	8	0,0042	AISI304L
7	HEXAGON HEAD BOLT	0014-1100071	8	0,04	A2
6	HEXAGON NUT	0054-1100010	6	0,035	AISI304
5	WASHER	0065-1100008	6	0,0115	AISI304L
4	HEXAGON HEAD BOLT	0014-1100128	6	0,12	A2
3	2" LPG ARM R.H.+ ERC+ANSI300+DDC+3651	18025703DX-01	1	110	AISI304L+PTFE
2	3" LPG ARM R.H.+ ERC+ANSI300+DDC+3651	18025706DX-01	1	150	AISI304L+PTFE
1	STANDPOST-HOT GALVANAIZED+PARKING	18015736DX-01	1	147	C.S.
Pos	Description	Code	Q.tà	W.f	Material

Remarks :

ITEMS NOT LISTED ARE FOR INTERNAL USE ONLY

www.silea.it
silea
 Liquid Transfer S.r.l.

Description

LPG LOADING STATION 3"L 2"V RH +ERC+DDC

Material

AISI304L+PTFE

Tratt.Term. o Tratt.Superf.

Rev.

Weight kg

Drawn by

Scale

Date

Code

1

413

Davide Chiavaro

1:20

21/05/2014

18035736DX-02